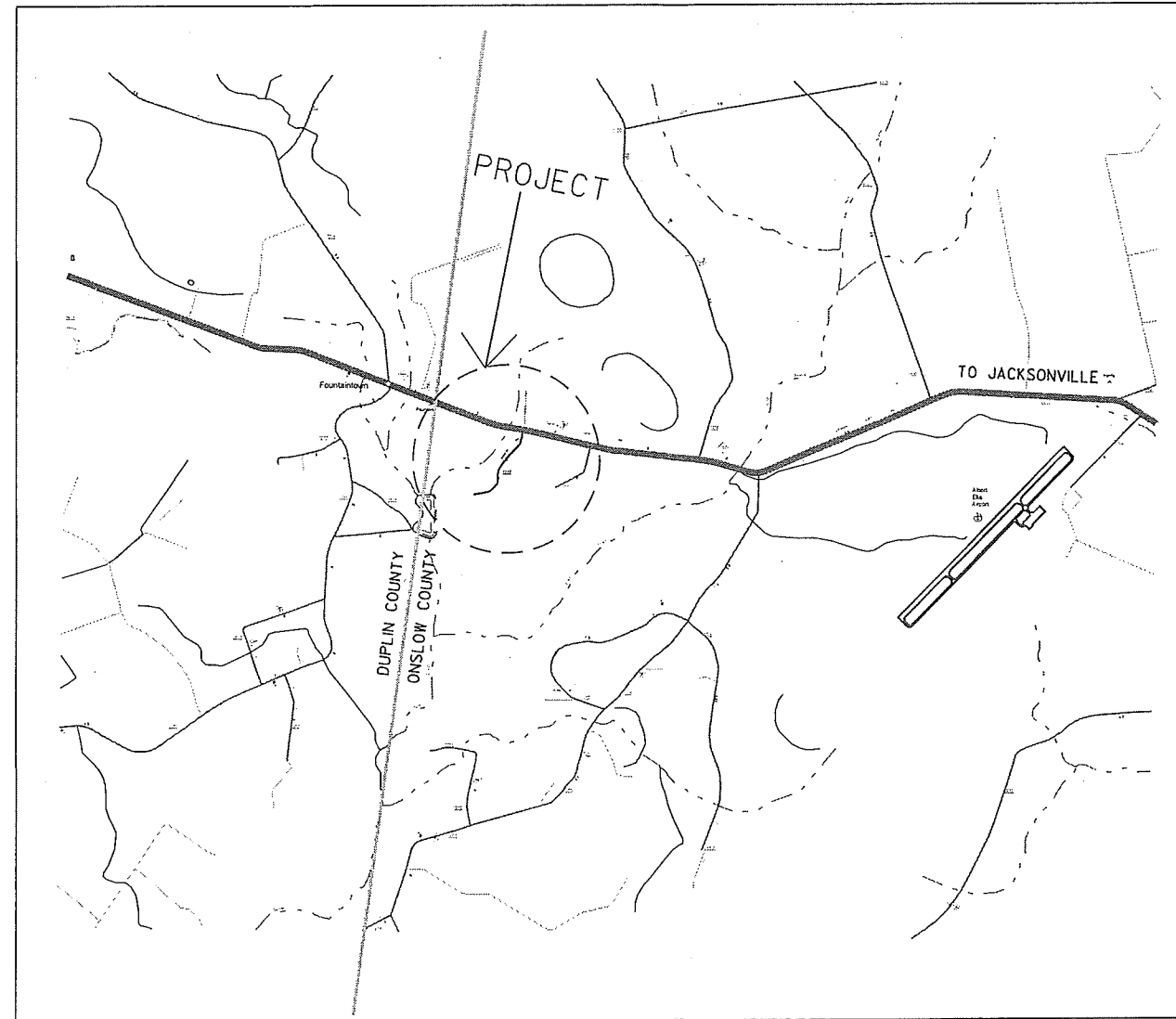
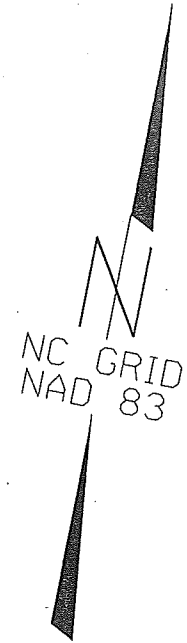


DEPARTMENT OF TRANSPORTATION
DIVISION OF HIGHWAYS



Prepared in the Office of:
Division of Highways
Division 3, District 1
Jacksonville, Onslow County, NC

Pavement Plan

November 18, 2010

STATE PROJECT REFERENCE NO. 3C.067019

LOCATION: ONSLOW COUNTY
PAVEMENT PLAN FOR
STATE ROUTE 1247 BAYSDEN ROAD

DEPARTMENT OF TRANSPORTATION
DIVISION OF HIGHWAYS

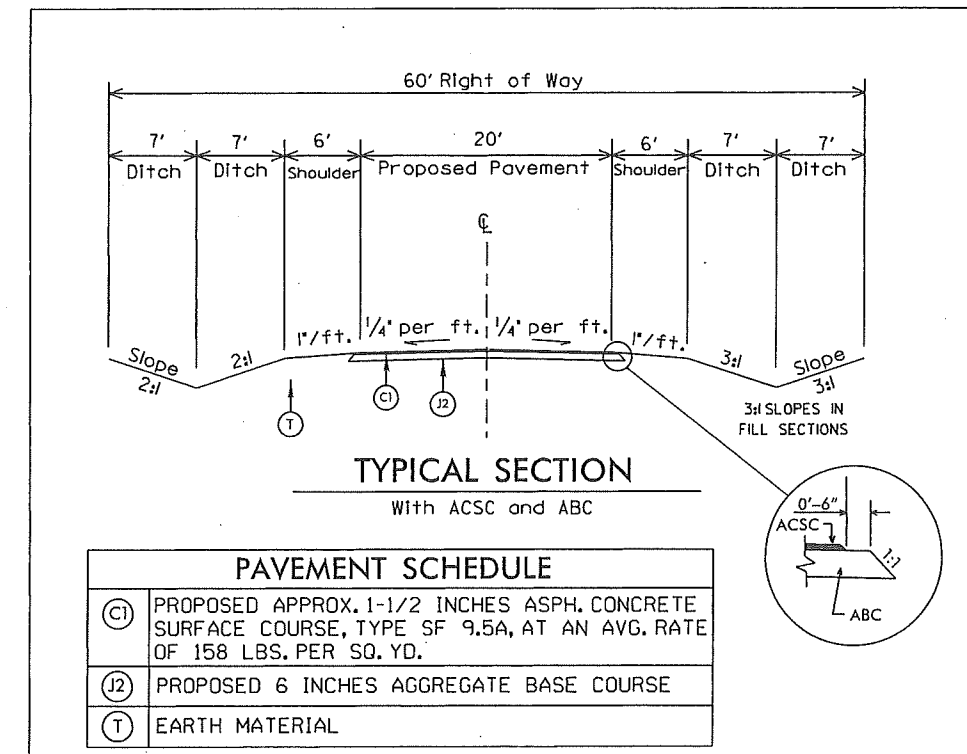
DATUM DESCRIPTION

THE LOCALIZED COORDINATE SYSTEM DEVELOPED FOR THIS PROJECT IS BASED ON THE STATE PLANE COORDINATES ESTABLISHED BY OTHERS FOR MONUMENT "EPK1"
WITH NAD 83 STATE PLANE GRID COORDINATES OF
NORTHING: 398,593.5019(ft) EASTING: 2,402,567.8727(ft)
ELEVATION: 81.57'(ft)
THE AVERAGE COMBINED GRID FACTOR USED ON THIS PROJECT (GROUND TO GRID) IS: 1.000000000
THE N.C. LAMBERT GRID BEARING AND LOCALIZED HORIZONTAL GROUND DISTANCE FROM "EPK1" TO -L- EL STATION 0+00.00 IS
ALL LINEAR DIMENSIONS ARE LOCALIZED HORIZONTAL DISTANCES
VERTICAL DATUM USED IS NAVD 29

BL	POINT	DESC.	NORTH	EAST	ELEVATION	EL STATION	OFFSET
OAK1		NCGS MON	398713.4841	2401748.7332	79.00	13+47.01	827.66 RT
EPK1		EPK	398593.5019	2402567.8727	81.57	13+27.88	0.00
BL1		REBAR & CAP	398158.7799	2402499.7653	83.45	4+33.46	23.88 LT
BL2		REBAR & CAP	397862.8103	2402176.0024	76.48	8+65.83	21.27 RT
BL3		REBAR & CAP	397326.4416	2401804.5172	79.06	15+08.87	30.25 RT
BL4		REBAR & CAP	396960.4115	2401822.2905	78.63	18+65.79	18.60 LT
BL5		REBAR & ACP	396690.0980	2401489.6430	74.99	22+87.72	20.77 LT
BL6		REBAR & CAP	396677.1968	2401164.8659	78.52	26+09.18	27.28 RT

PIPE SCHEDULE

PIPE	STATION	EXISTING PIPE		PROPOSED PIPE		COMMENTS
		SIZE	LENGTH	SIZE	LENGTH	
A	22+64.2	24" RCP	37.2'			
B	17+98.0	18" RCP	30.6'			
C	12+64.9	18" RCP	29.4'			
D	7+87.6	15" RCP	28.5'			
E	1+77.5	18" RCP	33.7'			
F	0+20.7	15" RCP	44.8'			



Prepared in the Office of:
Division of Highways
Division 3, District 1
Jacksonville, Onslow County, NC

Pavement Plan

November 18, 2010

STATE PROJECT REFERENCE NO. **3C.067019**

LOCATION: ONSLOW COUNTY
PAVEMENT PLAN FOR
STATE ROUTE 1247 BAYSDEN ROAD

-EL- POT 26+79.36

DAVID JOHN KILPATRICK, II
DB 3015 PG 339
MB 22 PG 147
MB 22 PG 190
MB 54 PG 108

NC GRID
NAD 83

RAUL RODRIGUEZ
DB 3299 PG 904
MB 52 PG 211

MISTY L. MCWILLIAMS
DB 3327 PG 172
MB 52 PG 211

-EL- PT 22+75.31

20' DRAINAGE & UTILITY EASEMENT PER ME 52

24" WALNUT

BL-6

EIR
75.35
75.87
74.26
75.07

1" OAK

10" OAK

10" OAK

12" POPLAR
6" GUM
24" MAPLE

16" CONC

12" POPLAR

TREES

-EL- S 79° 13' 21.3" W

GRAVEL

SR 1247 - BAYSDEN ROAD

GRAVEL

EXISTING
CONC R/W MON

BL-5

APPROXIMATE END OF NCDOT R/W
PER MB 52 PG 211

COUNTY LINE INVESTORS, LLC
DB 3004 PG 672
DB 342 PG 153
MB 54 PG 108

CURVE CUR5 DATA
PI STA 21+97.82
 $\Delta = 35^\circ 00' 34.93" RT$
 $D = 21^\circ 51' 29.78"$
 $R = 262.1240'$
 $L = 160.1668'$
 $T = 82.6718'$

Prepared in the Office of:
Division of Highways
Division 3, District 1
Jacksonville, Onslow County, NC

Pavement Plan

Scale: 1" = 40'

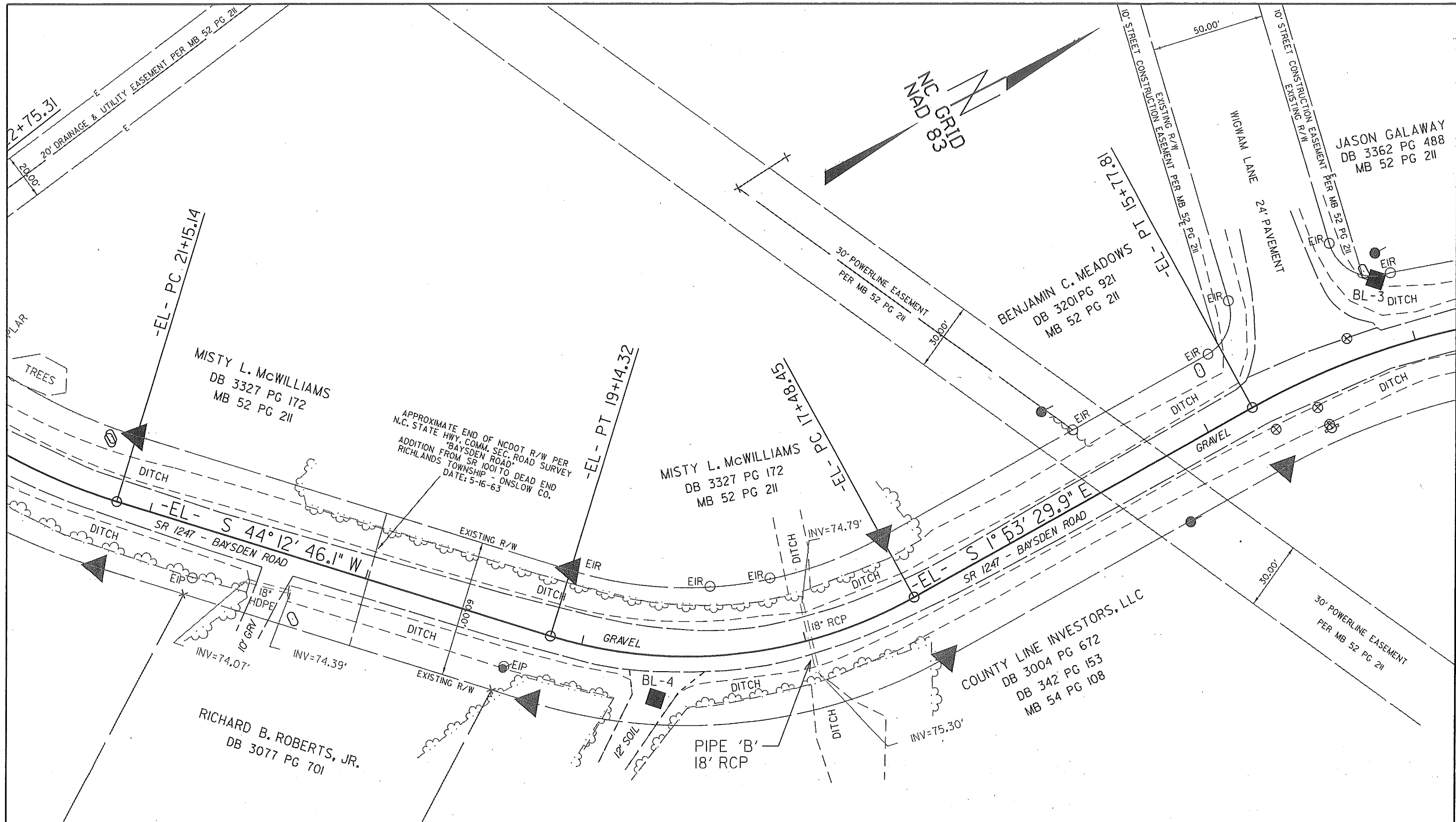
November 18, 2010

Page 1 of 5

STATE PROJECT REFERENCE NO. **3C.067019**

Map No. 1

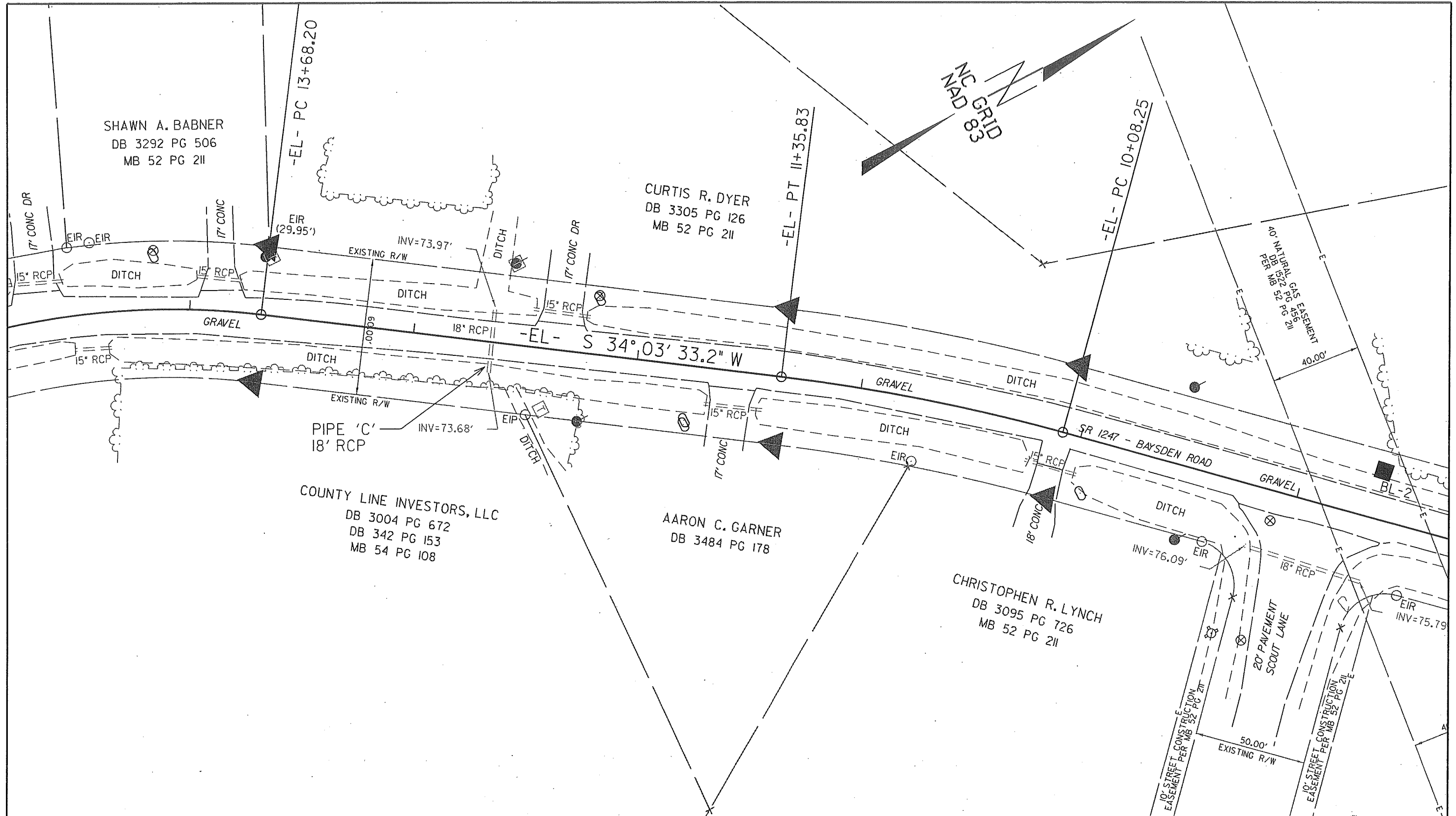
LOCATION: ONSLOW COUNTY
PAVEMENT PLAN FOR
STATE ROUTE 1247 BAYSDEN ROAD



Prepared in the Office of:
Division of Highways
Division 3, District 1
Jacksonville, Onslow County, NC

Pavement Plan
 Scale: 1" = 40'
 November 18, 2010
 Page 2 of 5

STATE PROJECT REFERENCE NO. **3C.067019** Map No. 1
LOCATION: ONSLOW COUNTY
PAVEMENT PLAN FOR
STATE ROUTE 1247 BAYSDEN ROAD



SHAWN A. BABNER
 DB 3292 PG 506
 MB 52 PG 211

CURTIS R. DYER
 DB 3305 PG 126
 MB 52 PG 211

COUNTY LINE INVESTORS, LLC
 DB 3004 PG 672
 DB 342 PG 153
 MB 54 PG 108

AARON C. GARNER
 DB 3484 PG 178

CHRISTOPHEN R. LYNCH
 DB 3095 PG 726
 MB 52 PG 211

Prepared in the Office of:
Division of Highways
Division 3, District 1
Jacksonville, Onslow County, NC

Pavement Plan

Scale: 1" = 40' November 18, 2010 Page 3 of 5

STATE PROJECT REFERENCE NO. **3C.067019** Map No. 1
LOCATION: ONSLOW COUNTY
PAVEMENT PLAN FOR
STATE ROUTE 1247 BAYSDEN ROAD



PIPE 'D'
15" RCP
DITCH
EXISTING R/W
INV=73.71'

CURTIS R. DYER
DB 3305 PG 126
MB 52 PG 211

GENE P. SHEPARD
DB 1017 PG 337

LANELL JOHNSON
DB 3064 PG 443

PIPE 'E'
18" RCP
INV=75.47'

MICHAEL J. TORRES
DB 3285 PG 58
MB 52 PG 211

GAVIN R. BRUMMUND
DB 3237 PG 217
MB 52 PG 211

JOSHUA C. DAVIS
DB 3271 PG 492
MB 52 PG 211

MARY B. RAYNOR
DB 2596 PG 445

S 42° 24' 55.4" W

-EL- PT 4+84.73

-EL- PC 3+42.20

AT EIR (30.32')

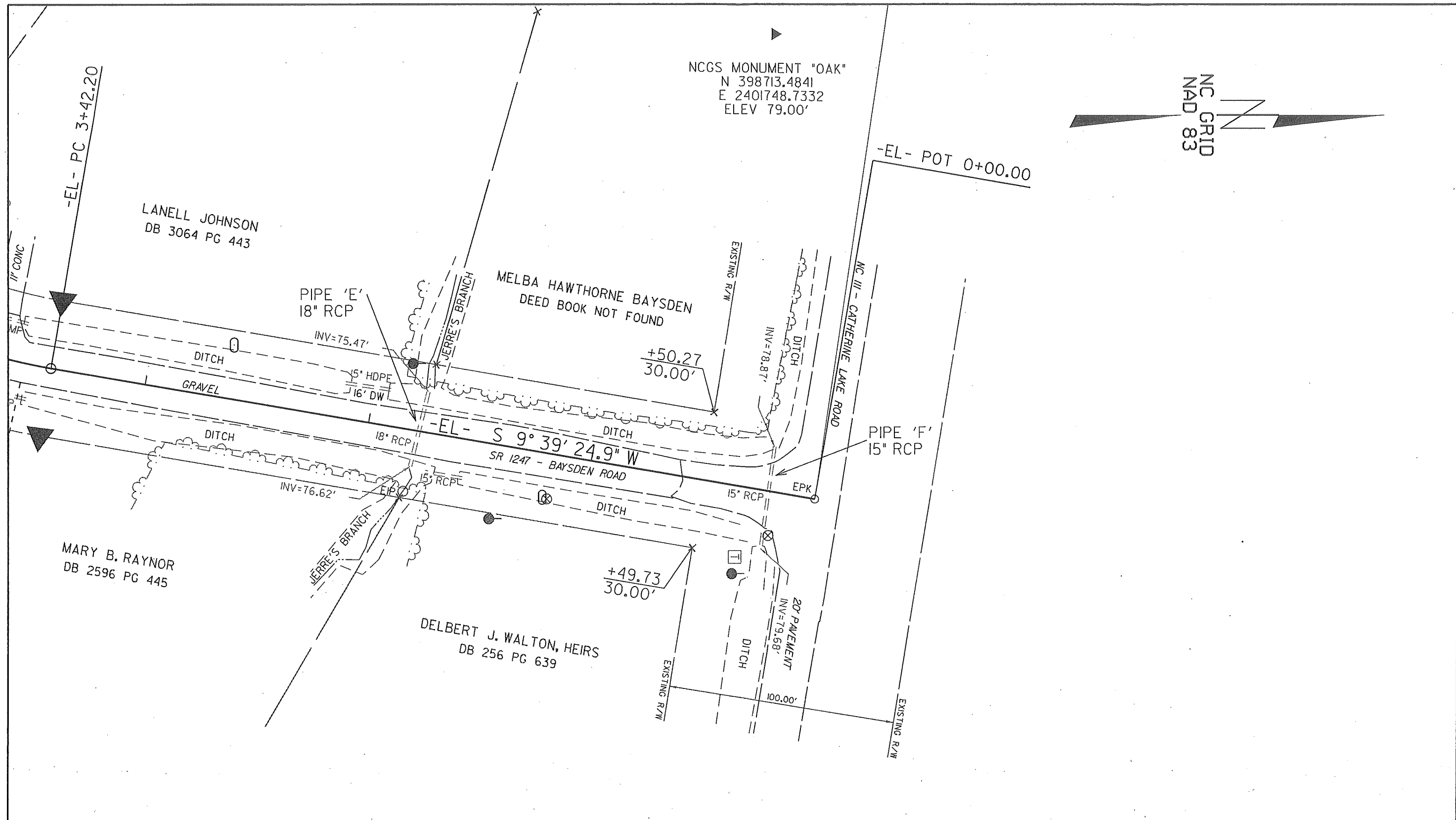
INV=76.62'

40' NATURAL GAS EASEMENT
PER DB 52 PG 211

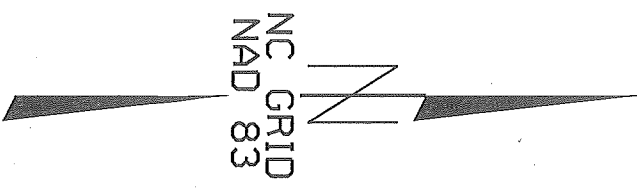
Prepared in the Office of:
Division of Highways
Division 3, District 1
Jacksonville, Onslow County, NC

Pavement Plan
Scale: 1" = 40'
November 18, 2010
Page 4 of 5

STATE PROJECT REFERENCE NO. **3C.067019** *Map No. 1*
LOCATION: ONSLOW COUNTY
PAVEMENT PLAN FOR
STATE ROUTE 1247 BAYSDEN ROAD



NCGS MONUMENT "OAK"
 N 398713.4841
 E 2401748.7332
 ELEV 79.00'



Prepared in the Office of:
Division of Highways
Division 3, District 1
Jacksonville, Onslow County, NC

Pavement Plan
 Scale: 1" = 40'
 November 18, 2010
 Page 5 of 5

STATE PROJECT REFERENCE NO. **3C.067019** *Map No. 1*
LOCATION: ONSLOW COUNTY
PAVEMENT PLAN FOR
STATE ROUTE 1247 BAYSDEN DRIVE